

# C22C/X22C Graphic Specifications

Color mode should be CMYK (for detachable graphics)  
Color mode should be CMYK (for photo-mural panels)  
Resolution should be 100-200 dpi at final size  
Files should be built at 25%, 50% or 100% to scale  
1/2" bleed at 100%  
All fonts should be converted to outlines or included  
Printed layout or PDF file **must** be included

We recommend all text/logos be created or placed as "vector" art

Build and leave all critical colors as PMS colors from the available swatch pallets (if building in Photoshop, please send original .psd file so we can edit colors if needed)

When using Illustrator, link all photos or images. Do not embed images

Linked photos or images should be saved as .tif or .eps

We can accept files created in:

Adobe Illustrator (save as .ai or .eps)

Adobe Photoshop (save as .psd or .tif)

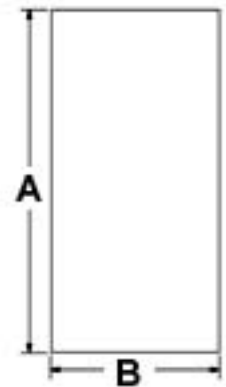
All other formats should be saved as .eps or .pdf

Files can be uploaded to our FTP site (call for info), sent via email (under 10mb only) or sent on a DVD, CD or Zip disk

## Front Panels

**A=58.6875"**

**B=26.5"**



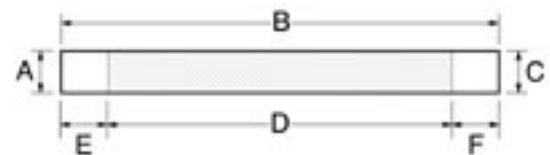
## End Panels

**A=58.6875"**

**B=22"**



## Velcro On Graphic Header



**A/C=12"**

**B=97" (full wrap) or D=53" (front only)**

**E/F=22"**



**Exhibit Solutions**  
O F N E W M E X I C O

Remember to check

Colors  Spelling  Scale  Resolution